



Good News of Grace

Grace Lutheran Church

Green Bay, Wisconsin

May 22, 2019

*We celebrate Christ,
teach Christ,
witness to Christ,
and care for others
as though they are Christ.*

MOVING THE MEMORIAL TRUST FUNDS

At the April meeting of the Congregation Council, the decision was made to move the Memorial Trust Fund from Associated Bank to the ELCA Foundation and to appoint the Memorial Trust Committee as the successor trustee. This decision was made after a presentation from the Memorial Trust Committee. An explanation of this decision was given at the May 5 budget meeting and is provided here for those who could not attend this meeting.

Background Information

The Memorial Trust was established by visionary leaders of the congregation in 1968. It is intended that this Trust Fund (currently valued at a little more than \$2 million) not be used for the operational or routine expenses of Grace Lutheran Church, nor the general benevolence fund of the ELCA. Instead, income from the Trust is to be used for one-time expenses by Boards and others. For example, income from

the Trust's investment has funded the work of the Vision Team. The Trust can also be used to finance capital improvements through loans, such as the loan that was approved for sanctuary renovation expenses a few years ago. The Memorial Trust Committee is comprised of the senior pastor (Pastor Larry), the Council President (Matthew DeClerc), the Council Treasurer (Kirk Uslabar), and three at-large members who serve nine-year terms (currently Katie Paplham, Jeff Jazgar, and Scott Ashmann).

Socially Responsible Investment

For the past three years, the Committee has been exploring socially responsible investment, which means any investment strategy which seeks to consider both financial return and social/environmental good to bring about a positive change. In general, socially responsible investors encourage corporate practices that promote environmental stewardship, consumer

Cont'd. on Page 2

Guide to the Good News:

Moving the Memorial Trust Funds	Front Cover & Pg. 2	From the Parish Administrator	Page 7
From the Pastor	Pages 2 & 3	Board Board	Page 8
Celebration	Page 4	Volunteer Opportunities	Page 9
Education	Page 4 & 6	Worship Minister Schedule	Page 9
June 2019 Calendar	Page 5	Access to Grace	Back Cover
Personal Growth	Page 7		

DEADLINE FOR THE NEXT GOOD NEWS OF GRACE: The next "Good News of Grace" will be sent out the week of June 3. Please have articles in to the Church Office by 12:00 noon Monday, June 3, 2019.

protection, human rights, and diversity. Following ELCA guidelines, the Committee defined socially responsible investing as prohibiting investment in gambling, tobacco, pornography, and private prisons and limiting investment in distilled alcohol, environmental harm, and military weapons. With our current trustee (Associated Bank), limiting tobacco and alcohol investments would be easier to do than the more comprehensive socially responsible investing possible through the ELCA. We would still get some diversification in our investment portfolio, but we would not continue to achieve our current return on investment.

ELCA Foundation

In late 2017, the Committee began exploring other options for investment. We met twice with representatives of the ELCA Foundation and had multiple e-mail and phone discussions as well. We learned that the ELCA Endowment Fund Pooled Trust – Fund A was established to allow for the collective long-term investment of funds belonging to the ELCA and its congregations. The ELCA has been doing this kind of investment since 1992. To the extent possible, Fund A pursues investment objectives in line with the ELCA socially responsible investment guidelines. The ELCA administers Fund A, but a congregation retains ownership of its own funds.

Currently, there is approximately \$681 million in Fund A – ELCA assets (such as the World Hunger Fund) total approximately \$346 million while funds held by others (such as congregations, camps, Grace’s Mission Endowment Fund) add up to approximately \$335 million. From the income generated by this Fund, the ELCA is able to invest in various ministries. For example, in 2017, \$36.4 million was distributed to 230 missionaries in more than forty countries, seven ELCA seminaries, 26 colleges and universities, and 518 projects that helped fight hunger in 62 countries. Fund A also makes investments in companies that are making a positive impact in the world.

Recommendation to the Council

At the April Council meeting, the Memorial Trust Committee recommended that the Memorial Trust be transferred from Associated Bank to the ELCA Foundation. The benefits of investing in the ELCA Fund A are:

- A comparable return on investment to that projected by Associated Bank
- An investment of money into other programs Grace Lutheran Church deems valuable, such as seminaries, camping ministries, and ELCA colleges
- We are an ELCA member that would be supporting an ELCA initiative
- There is a much greater degree of socially responsible investment
- Comparable fees to those charged by Associated Bank

As part of our due diligence as a Committee, we had the original trust document reviewed by two attorneys familiar with trust law and practice. Neither determined any concerns with our recommendation. At every point in the process, the Committee followed the rules set forth in the Trust document.

To be clear, nothing has changed with the process used to request funds from the Memorial Trust – an application for distribution of income is still screened by the Council, and then submitted to the Memorial Trust committee for approval. The Trust document itself also remains unaltered. The only change is where the Trust’s funds are being invested. It is similar to the decision someone might make to move their personal savings account money from one bank to another.

If you have any questions about this decision, please feel free to contact the Church Office or any member of the Memorial Trust Committee.

Scott Ashmann, Chair, Memorial Trust

FROM THE PASTOR

“Sabbatical leaves are encouraged to provide an opportunity for the pastor to have an extended period of time for personal enrichment, study, spiritual growth, travel, skill development and/or research. This is the adopted policy of the Evangelical Lutheran Church in America and the East Central Synod of Wisconsin for all congregations.”

East Central Synod of Wisconsin Compensation Guidelines

Sabbatical for Pastor Larry

Grace has provided for three-month sabbaticals for called pastors since 1997. Called pastors at Grace are eligible for a sabbatical every 5 years. I have taken sabbaticals in 2008 and in 2013. I have one planned for this year. Last year, I applied for admission to two competitive writing workshops and, to my surprise, I was accepted for both. Between continuing education time and vacation time last year, I was able to attend both workshops. The workshops were conducted and attended by published authors, writing professors and professors in other fields, pastors, and lots of other interesting people! I took several writing projects to both workshops and was encouraged to finish one of the projects ... a novel.

The Novel

This is what I'll work on for the first month of this sabbatical. The novel begins at a time in the narrator's life when she has lost everything ... home, husband, mobility, purpose. As a young girl she wanted to be a pastor; later in life she imagined writing a history of her congregation as a way of connecting her life to the story of a community she knew would outlast her. These dreams faded. Struggling with what to do next when she feels she can do next to nothing, it occurs to her to try to help her new pastor get to know her new congregation by sharing stories about the families in the congregation. As she tells these stories, they bring to her mind questions that the upheavals at the end of her life raised. How does telling these stories help her think through her questions?

The coherence of the narrative framework and the voice of the narrator need some attention. I'll also be trying to publish parts of the novel as individual stories, a common practice which helps establish the possibility of publishing the entire novel.

A Walk in the Cascades

For the second month of my sabbatical beginning June 23, my daughter Liz and I are heading for the Washington state section of the Pacific Crest Trail. We start by crossing the "famous" Bridge of the Gods over the Columbia River. Lindbergh flew the Spirit of St. Louis *under* the bridge as a stunt to celebrate his trans-Atlantic flight. The bridge is named after an even older event: a

landslide that created a bridge across the Columbia remembered by the Native people in that area. The mighty Columbia washed that land bridge away. 400 miles later we reach Holden Village, a Lutheran retreat center in the Cascade Mountains. A great place for learning and liturgy, it can't be accessed by road. Their bus will take us down the mountains to Lake Chelan where a ferry and yet another bus will take us to the train ride home. I return to work on Monday, August 5.

While I'm Gone ...

- Pastor Julie will be available to assist with the Boards I usually work with.
- For June, July, and August, the Women's Bible Study will meet monthly on the first Tuesdays of the month at 10:30 a.m.
- Council members are signing up to welcome guests for the Thursday evening services.
- **Communion Assistants:** In addition, we'll be needing one extra communion assistant for all Sunday services this summer. If you haven't served in that way yet, now is the perfect time. Call our Parish Secretary Ann at 432-0308 today! If you're willing to serve more often this summer, please call Ann as well.
- **Questions of the Week:** I have two responses to Questions of the Week to write yet. One will be a website/facebook blog on Tuesday, May 21; the other will be a blog on May 28. You can see all the questions the kids asked and my replies on the website www.gracegb.org or facebook. During the rest of sabbatical I won't be responding to Questions of the Week, so the Question of the Week Box on Kidspace will reappear again in August. The Questions of the Week have been amazing; it's been a great challenge to answer them using words kids can understand!

Thank you!

Thank you very much for your support for sabbaticals for pastors at Grace! Thank you very much for the opportunities for the extra work and play my sabbaticals have offered me. Several reports will be available to you following my time away including a presentation at Young at Heart on Friday, September 13. God's blessings to you and your families this summer!

Pastor Larry



PREPARATION FOR WORSHIP

Thursday, May 23 at 5:30 pm and Sunday, May 26 at 8:00 & 10:00 am

Sixth Sunday of Easter

Events:

Coffee Hour

Readings:

Acts 16:9-15, Psalm 67, Revelation 21:10, 22-22:5, John 14:23-29 or John 5:1-9

Thursday, May 30 at 5:30 pm and Sunday, June 2 at 8:00 & 10:00 am

Seventh Sunday of Easter

Events:

New Member Reception

Coffee Hour

Adult Education

Youth Board

Readings:

Acts 16:16-34, Psalm 97, Revelation 22:12-14, 16-17, 20-21, John 17:20-26

Thursday, June 6 at 5:30 pm and Sunday, June 9 at 8:00 & 10:00 am

The Day of Pentecost

Events:

High School Graduate Recognition

Coffee Hour

Adult Education

Readings:

Acts 2:1-21, Psalm 104:24-34, 35b, Romans 8:14-17 John 14:8-17 [25-27]

WORSHIP TIMES

Thursday at 5:30 pm and Sunday at 8:00 & 10:00 am.



Our Worship is Broadcast on Radio 1400AM at 8:00 am

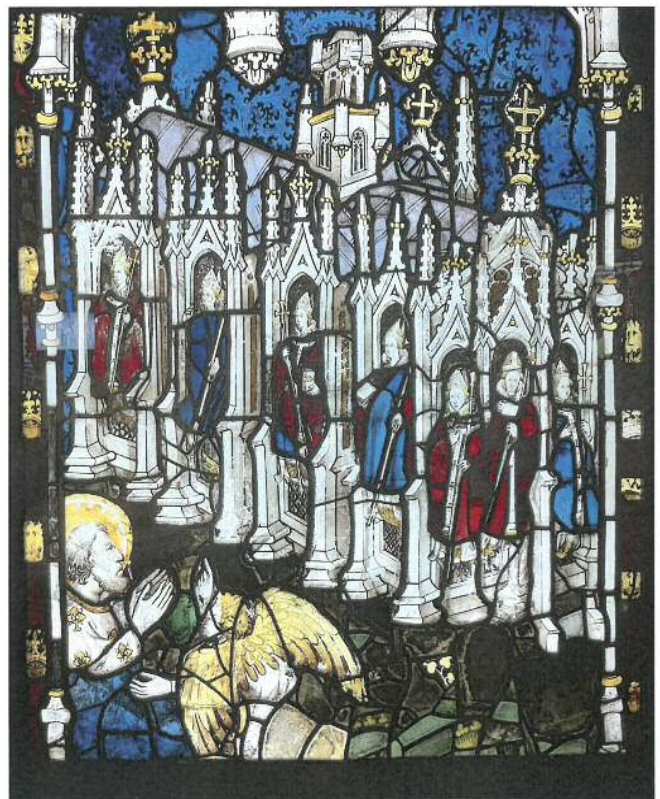
WE GRATEFULLY ACKNOWLEDGE THE RECEIPT OF A GIFT TO:

- The Youth Band given by an anonymous donor with thanks for being an inspiration to us all.
- The Food Pantry given in honor of Noah Lange's wedding from friends.
- The Radio Fund given in memory of Bernard Rasmussen by his family






Coffee and Conversation about

The 7 Churches of Revelation



Beginning Sunday, June 2
9:15 – 9:45 in the Dining Room

JUNE 2019

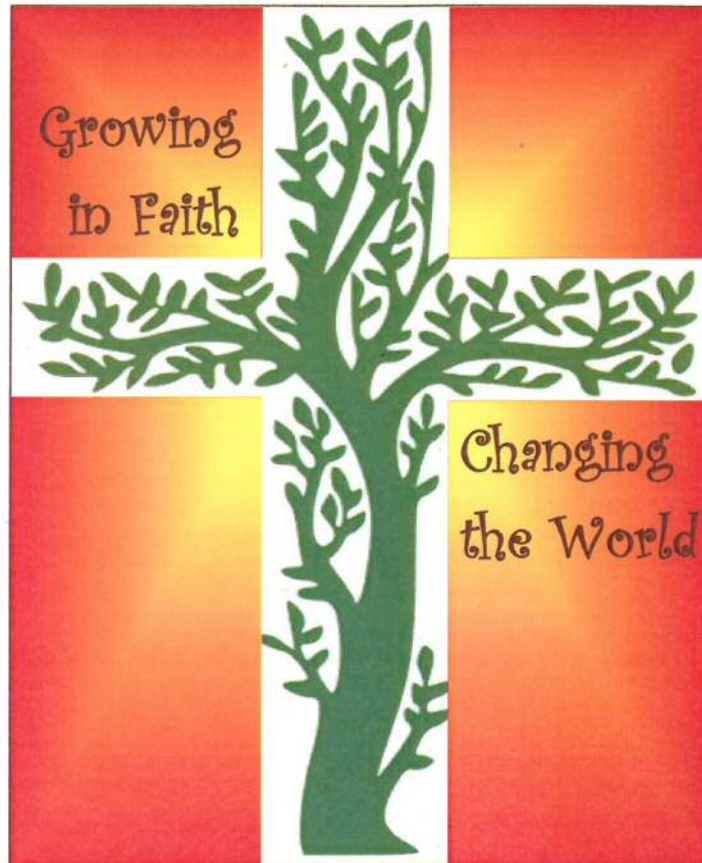
Sun	Mon	Tue	Wed	Thu	Fri	Sat
						1
2 8:00&10:00-Worship New Members Rcv'd. 9:00-Fair Trade Coffee Sale 9:00-Coffee Hour 9:15-Adult Education 11:00-Youth Board	3	4 10:30-Women's Bible Study 1:00-Food Pantry 6:30-Bd Outreach 6:30-Bd. Structures & Grounds	5 6:00-VBS Mtg.	6 5:30-Worship	7 9:00-Food Pantry	8 4:30-New Community Shelter Meal
9 8:00&10:00-Worship High School Grads recognized 9:00-Coffee Hour 9:15-Adult Education	10	11 9:15-Sarah Circle 1:00-Food Pantry 6:30-Bd Personal Growth	12 6:30-Bd Education	13 5:30-Worship	14 9:00-Food Pantry 12:00-Young at Heart Lunch	15 9:00-Worship Band Reh.
16 8:00-Worship 10:00-Worship w/ Worship Band 9:00-Coffee Hour 9:15-Adult Education	17	18 1:00-Food Pantry 6:30-Bd. Stewardship 6:30-Bd. Celebration	19	20 8:30-Mission Sewing 5:30-Worship 6:30-Hymn Picking 6:30-Curriculum Mtg.	21 9:00-Food Pantry	22
23 8:00&10:00-Worship 9:00-Coffee Hour 9:15-Adult Education	24 6:30-Mission Trip Meeting	25 1:00-Food Pantry 6:30-Council Mtg.	26 6:30-Vision Com.	27 5:30-Worship	28 9:00-Food Pantry	29
30 8:00&10:00-Worship 9:00-Coffee Hour 9:15-Adult Education						

5

For Room Numbers see "Today at Grace" on the monitor in the Lobby.



VACATION BIBLE SCHOOL 2019



GRACE LUTHERAN CHURCH

Friday, July 26, and Saturday, July 27, 2019

9:00 a.m. to 4:00 p.m.

Open to ages pre-K through grade 6.

\$10 per student (financial aid available)

Registration begins May 19th.

Registration forms may be found on the courtesy desk,
in the lobby or on our website www.gracegb.org



FROM THE PARISH ADMINISTRATOR



“YOUNG AT HEART”
The next Young at Heart Lunch will be June 14 at 12:00 in the North Basement. We’ll have picnic food. The suggested donation is \$8.00. After lunch, our speaker is Linda Rabe with a presentation on the Mission Trip 2018. Sign up on the Courtesy Desk or call the Church Office at 432-0308.



Grace Lutheran Church offers an automated giving program through Simply Giving®. With Simply Giving®, your offering is automatically deducted from your checking or savings account. You determine the amount and the frequency (weekly, semi-monthly, monthly). It’s free to you and costs the church almost nothing (20 cents per transaction). You can change your deduction at any time, and you can cancel your deduction at any time.

Simply Giving forms are available on the courtesy desk, or contact Sharon at admin@gracegb.org or 432-0308.



“YOUNG AT HEART” 2019 CALENDAR

Below is a monthly listing of the programs we have scheduled so far for Young at Heart Luncheons. Mark the 2nd Friday of each month on your calendar for food, fun, and fellowship. We meet at Noon in the North Basement. The cost of the meal is \$8.00.

Here is the schedule for 2019:

- June 14:** Mission Trip 2018 -Linda Rabe
- July 12:** Picnic
- August 9:** Dementia Information by the Aging & Disability Resource Center of Brown County
- September 13:** Pastor Larry, Sabbatical Report
- October 11:** House of Hope
- November 8:** Jim Poels, How to Prevent Falls.
- December 13:** Sing-a-long

General Fund - April 30, 2019	
Year-to-date budget	\$ 511,139
Year-to-date actual income	\$ 535,482
Year-to-date actual expenses	\$ 516,368



Grace Lutheran Church

The Board Board



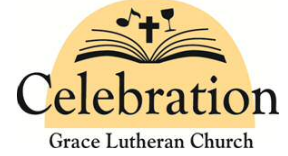
Grace Lutheran Church



Grace Lutheran Church



Grace Lutheran Church



Grace Lutheran Church

Next meeting: June 4

- ◆ Continued working on our welcoming process.
- ◆ The Undy 500 is coming up!
- ◆ Additional volunteers are needed for our food pantry

Next meeting: June 11

- ◆ Will host a Welcome Coffee Hour on Sunday, June 2nd for new members.
- ◆ Discussed the 2020 women's retreat (February 22, 2020!). The theme will be Mary Magdalene.

Next meeting: May 21

- ◆ Healing services will be held on April 27th and 28th.
- ◆ Encore Handbell Ensemble concert will be held at Grace, May 3rd at 7:30 p.m.
- ◆ Seeing God's Word recorded the Gospel for services on May 4 & 5



Grace Lutheran Church



Grace Lutheran Church



Grace Lutheran Church

Next meeting: June 12

- ◆ Join us July 26th & 27th for Vacation Bible School! This year the theme is "Growing in Faith: Changing the World." We will study the parable of "The Sower and the Seed" and see how we and others are changing the world. Registration is now open! Forms can be found in the parlor, in the lobby or on the website. See you there!
- ◆ Join us on Sunday mornings for coffee and conversation. The theme is "The Seven Churches of Revelation." We meet between services in the Dining Room at 9:15 a.m. Join us for what is sure to be a lively discussion!

Next meeting: May 21

- ◆ Continuing to plan the video for the annual budget meeting of the congregation.
- ◆ Reminder for everyone to attend the budget meeting on May 5th.
- ◆ Beginning to work on locating a presenter for a fall informational meeting on wills, trusts, and bequests.

Next meeting: June 2

- ◆ Discussed staffing and preparations for the Palm Sunday Breakfast – fundraiser for the Mission Trip.
- ◆ Discussed clean-up crew for Confirmation Family Fellowship.
- ◆ Next meeting: will discuss BC, Holy Donuts, Wednesday Night Meals for next year.



Grace Lutheran Church



Grace Lutheran Church

Congregational Council

Next meeting: June 4

- ◆ Discussed a t-coil system for the sanctuary for the hearing impaired. The system uses an induction loop to broadcast signals directly to compatible hearing aids. More information will be discussed at the next meeting.
- ◆ Board of Outreach is finalizing the design of the banner for the side of the building. Structures & Grounds will plan installation once the banner is procured.
- ◆ Dean will contact a stump removal service to remove the stumps in the parking lot island. Once the stumps are removed, we will need volunteers to help with removal of the old ground cover in the island.

Next meeting: May 28

- ◆ Addressed feedback from budget forums.
- ◆ Will present the fiscal year 2020 budget to the congregation at May 5th Congregational Budget Meeting.
- ◆ Received Vision Committee report and recommendations; approved an ad hoc team to support congregational hospitality training, extending Jim Ladoux's service for one year, and promote initiatives to Boards & Committees.
- ◆ Received report from the Memorial Trust Committee and approved the change of investment from Associated Bank to the ELCA Fund A which requires the trustee to be changed from Associated Bank to the Memorial Trust Committee.
- ◆ Received an update on Pastor Larry's sabbatical plan and coverage.
- ◆ Established the agenda for the Congregational Budget Meeting to include action on the proposed budget, informational update on the Memorial Trust change, and a stewardship presentation.

WORSHIP MINISTER SCHEDULE

THURS., MAY 23, 5:30 PM

Ushers: Andrea Hansen, Pam Anderson
 Lector & Com. Assist.: Jim Silha
 Accompanist: John Kopp

SUN., MAY 26, 8:00 & 10:00 AM

Lector & Com. Assist.: 8:00 - Mildred Watermolen, L&CA
 Lisa Herman, Byron Froelich, CA
 10:00 - Bob Mead, L&CA
 Kitty Nagel, Gayle Schmeling, CA
 Altar Guild: 8:00 - Linda & Dave Rabe, Debra LaHaye, April Swim, Sophia Mleziva
 10:00 - Diana Perrault, Susan Lambert-Tease, Sharon Lambert-Rademacher, Kathy Poels, Julia Nava, Jayd Winge
 Acolytes: 8:00 - Gus Terrien, Reni Krafft
 10:00 - Taylor Langhoff
 Ushers: 8:00 - Bill & Dee Kaehler, Bea Froelich, Byron Froelich, Ted & Barb Gloeckler, Pete Diemer
 10:00 - Kim Selissen, Paul & Jessica Wikgren, Bill Stollberg, Dick Destree, Daniel Selissen
 Accompanist: John Kopp
 Greeters: 8:00 - Beanie Dahlke, Julie Dallaire
 10:00 - Bill Miller, Shyla Theel, Barb Hubbard

THURS., MAY 30, 5:30 PM

Ushers: Bev Larsen, Karen Pangborn
 Lector & Com. Assist.: Scott Ashmann
 Accompanist: John Kopp

SUNDAY, JUNE 2, 8:00 & 10:00 AM

Lector & Com. Assist.: 8:00 - Lisa Willi, L&CA
 Pam Bins, Anne DeClerc, CA
 10:00 - Gayle Schmeling, L&CA
 Josh Moyer, Bern Jacobson, CA
 Altar Guild: 8:00 - Amy Vanko, Karen Neumann, Warren Neumann, Lisa Herman, Julie Dallaire, Ethan Hendrickson
 10:00 - Kitty Nagel, Linda Wier, Judy Taylor, Gayle Schmeling, Shyla Theel, Spencer Schaefer
 Ushers: 8:00 - Amy & Matt Vanko, Ty & Diane Pyan, Ethan Swim
 10:00 - Robert Goelz, Jim Poels, Robin Powell, Regan Mertens

Acolytes: 8:00 - Ryan Davidson, Jake Jazgar
 10:00 - Kayla Miller
 Greeters: 8:00 - Bob & Carol Wolslegel
 10:00 - Laurie Reinen, Anna Broeckel

THURS., JUNE 6, 5:30 PM

Ushers: Dave Branger, Margaret Nelson
 Lector & Com. Assist.: Bev Larsen
 Accompanist: Jason Pues

OPPORTUNITIES TO SERVE



USHERS

USHERS NEEDED:

Beginning June 16, we will need a new team of ushers for the 8 a.m. service.

- Usher teams serve about once every 4 weeks.
- They arrive a half hour before their service and serve to welcome guests and members to worship, collect the offering, and guide people to communion.
- Training and a guidebook will be available.

Please let Pastor Julie know ASAP if you can serve.

ONE CHANCE TO MAKE A FIRST IMPRESSION

At the recommendation of Jim Ladoux and the Vision Committee, Council is forming a committee to develop short presentations during worship designed to build on what we currently do to welcome guests to Grace. Jim Ladoux has plenty of resources to help this committee.



Time Commitment:

- Monthly meetings for about a year, more at first to develop the presentations.
 - Monthly presentations during worship
- Please contact Pastor Julie if you would like to serve on this committee.



ACCESS TO GRACE

GRACE LUTHERAN CHURCH

321 S. Madison St., Green Bay, WI 54301

Phone: 920 432-0308

www.gracegb.org office@gracegb.org

“Grace Lutheran Church Green Bay”



Worship Service Times:

Memorial Day Weekend thru

Labor Day Weekend

Thursday at 5:30 p.m. with Holy Communion

Sunday at 8:00 & 10:00 a.m. with Holy Communion

Fall & Winter

Saturday at 5:00 p.m. with Holy Communion

Sunday at 8:00 & 10:30 a.m. with Holy Communion

Christian Education each Sunday from 9:15 -10:15 a.m.

Staff:

Pastor Larry Lange Res. Phone: 920-455-0511
pastorlarry@gracegb.org

Pastor Julie Wrubbel-Lange Res. Phone: 920-455-0511
pastorjulie@gracegb.org

Visitation Minister: Pastor Rebecca Proefrock
Phone: 920-819-5482 rproefrock@yahoo.com

Organist: Denise Zenko

Parish Administrator: Sharon Haapala, admin@gracegb.org

Parish Secretary: Ann Zehms, office@gracegb.org

Maintenance Supervisor: Dean Ahrens, grounds@gracegb.org

Choir Director: John Kopp

Rev. Dick Schmeling: dickschmeling@gmail.com

Sunday School, Kathy Poels: education@gracegb.org

OUR SUNDAY WORSHIP SERVICE IS BROADCAST EACH WEEK AT 8:00 A.M. ON WDUZ RADIO 1400 AM

RETURN SERVICE REQUESTED

GRACE LUTHERAN CHURCH
321 S. MADISON ST.
GREEN BAY, WI 54301

Non-Profit Organization
U.S. POSTAGE PAID
GREEN BAY, WI
PERMIT NO. 353